

**Northland Community & Technical College
Organizational Chart
August 28, 2018**

**President
Dennis Bona**

Executive 2
Julie Fenning (1.0)
00751630



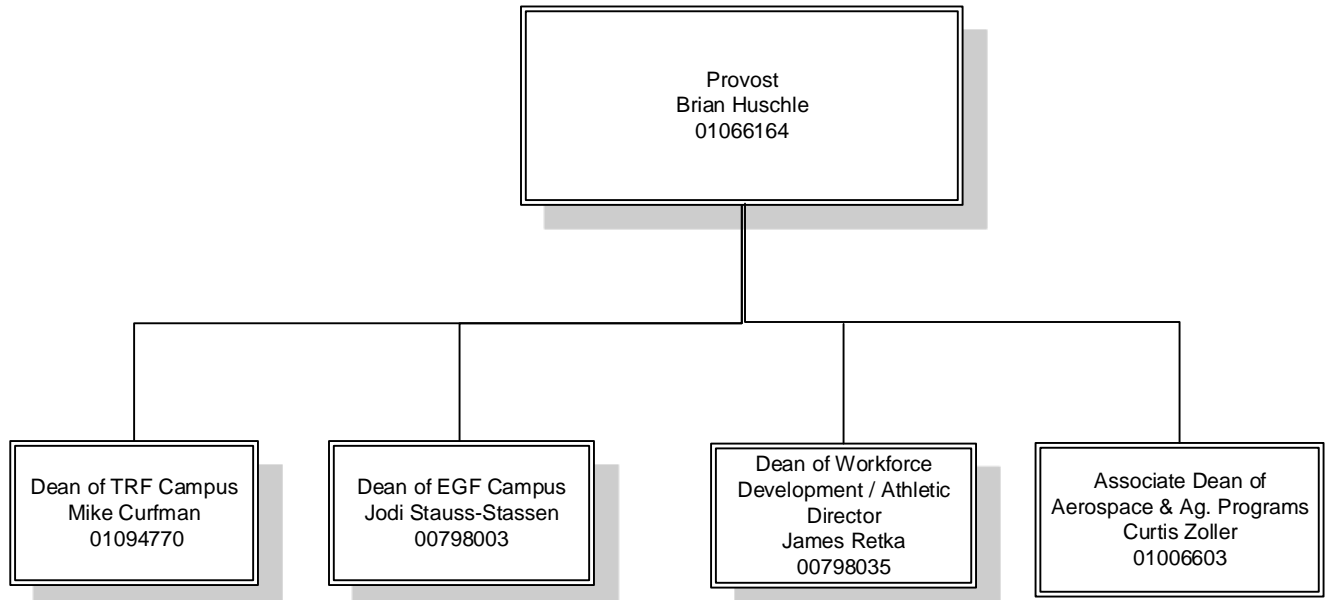
College-Wide Chain of Command

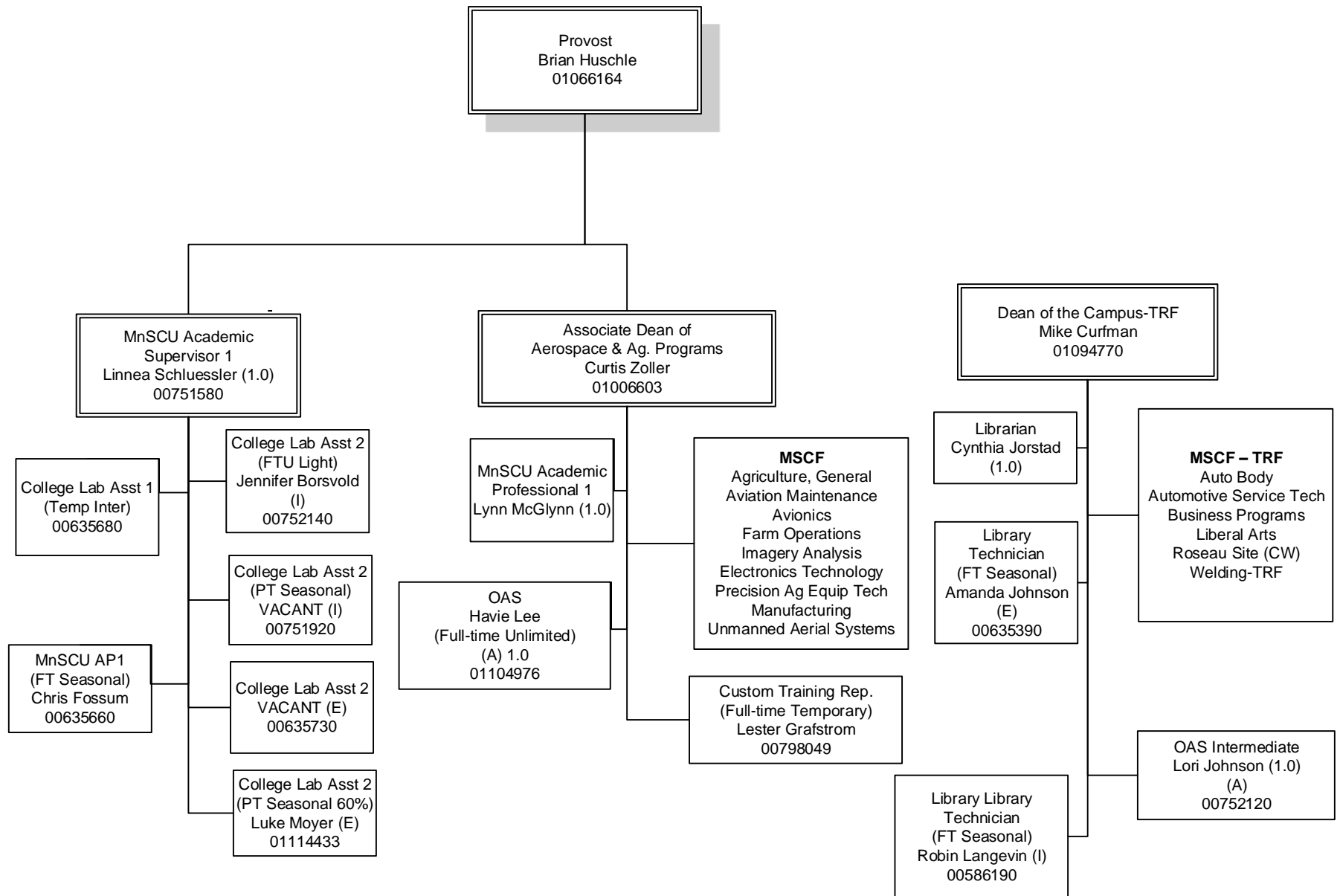
1. President
2. Vice President of Administrative Services
3. Provost
4. Director of Human Resources

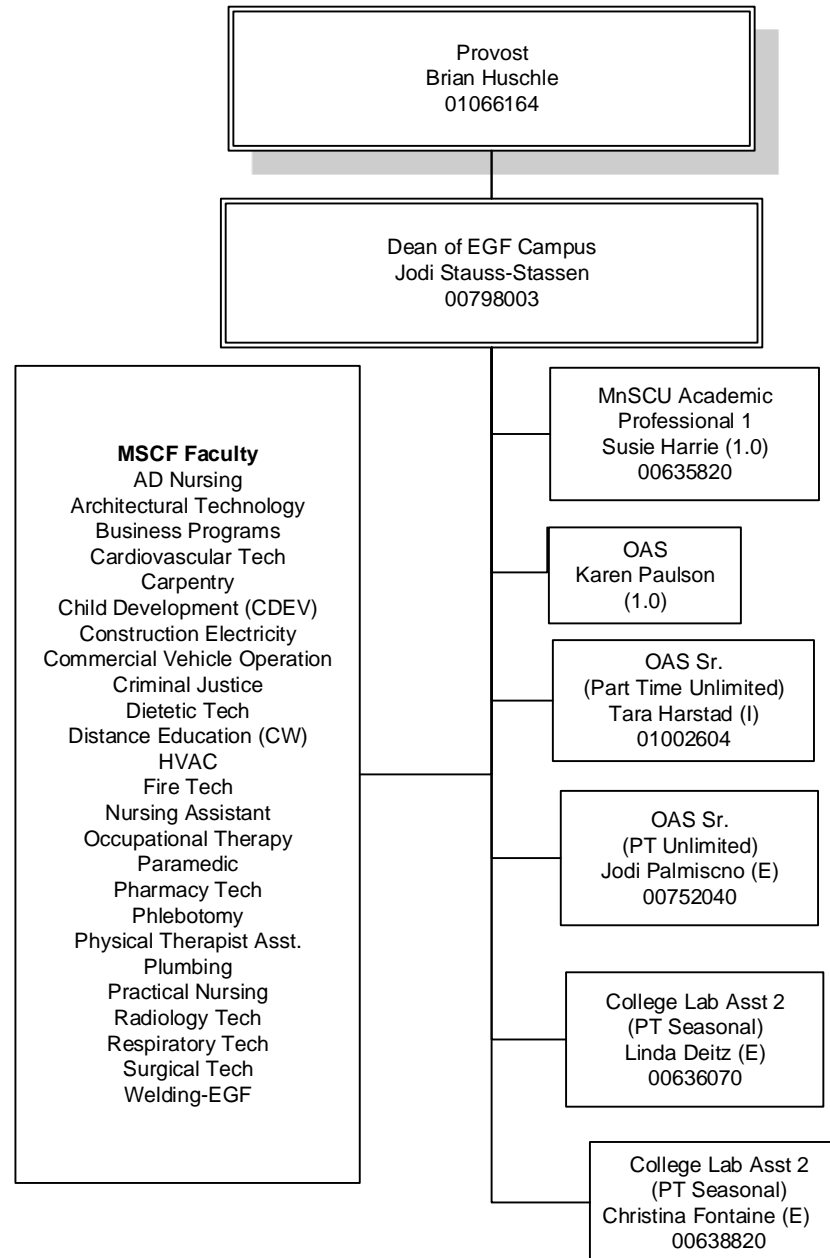
AFSCME Work Areas

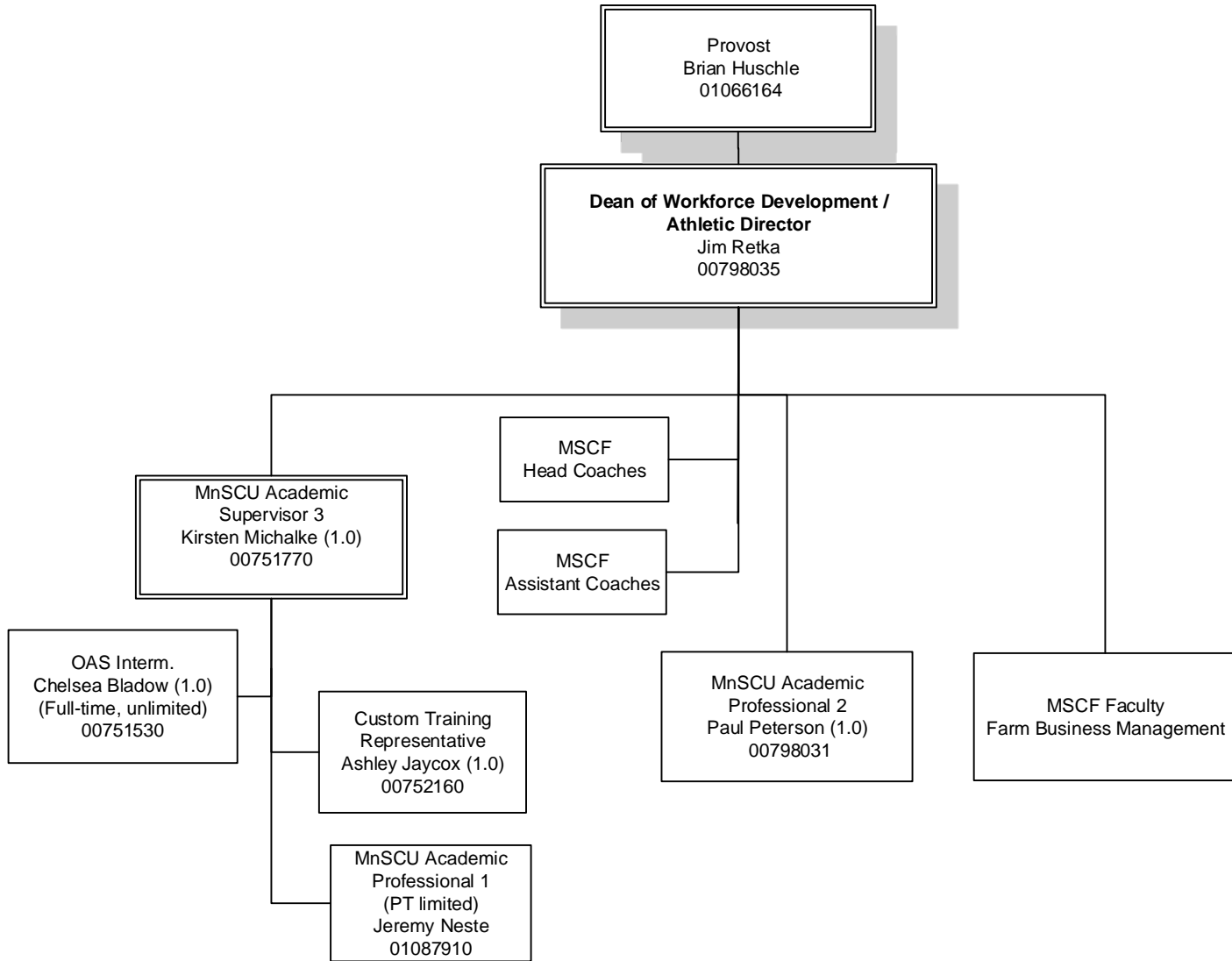
- E - East Grand Forks
- A - Administrative Support-TRF
- I - Instructional Support-TRF
- M - Maintenance-TRF

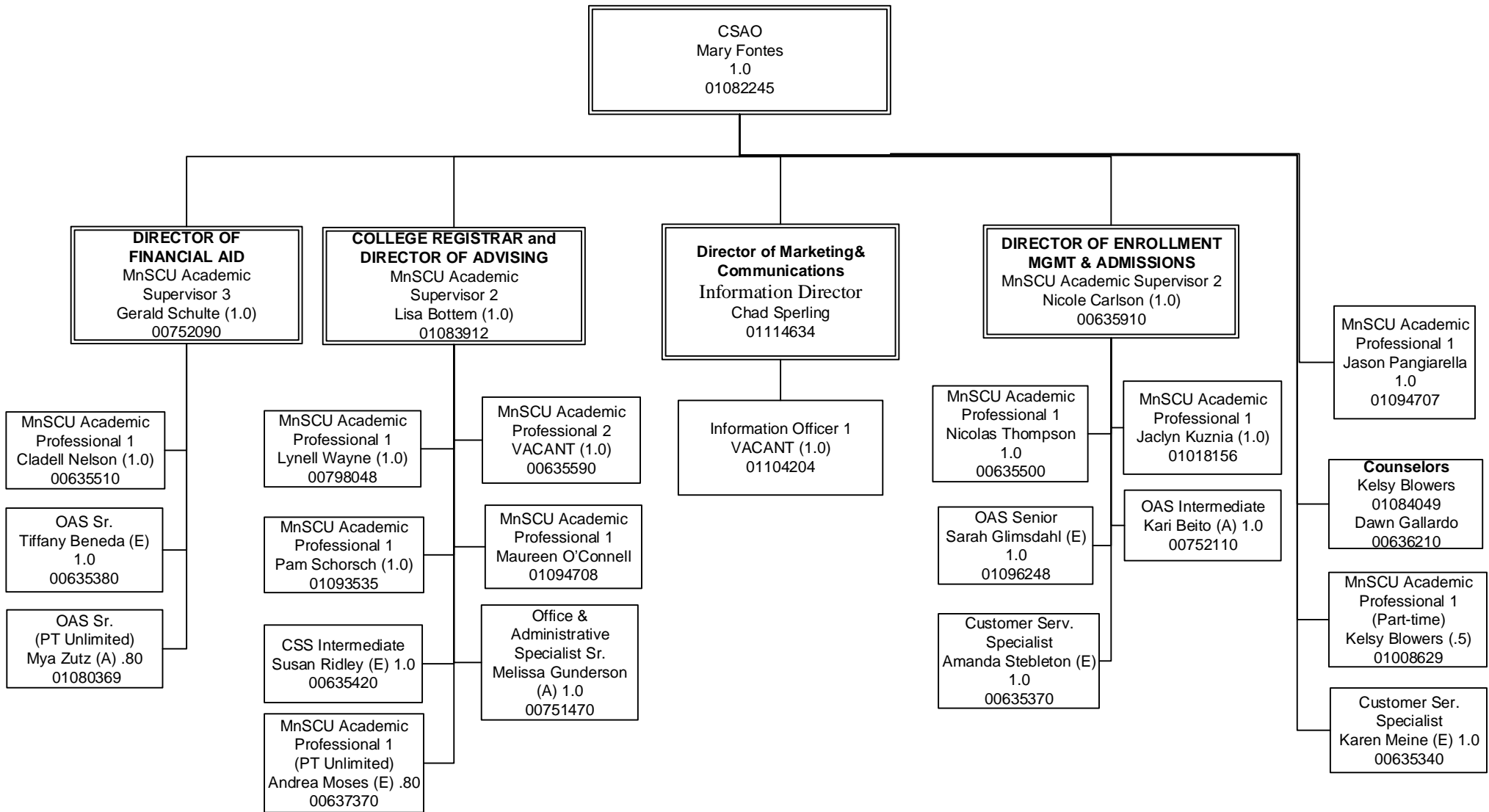
President's Direct Reports











Vice President of Administrative Services
Shannon Jesme
00490140

